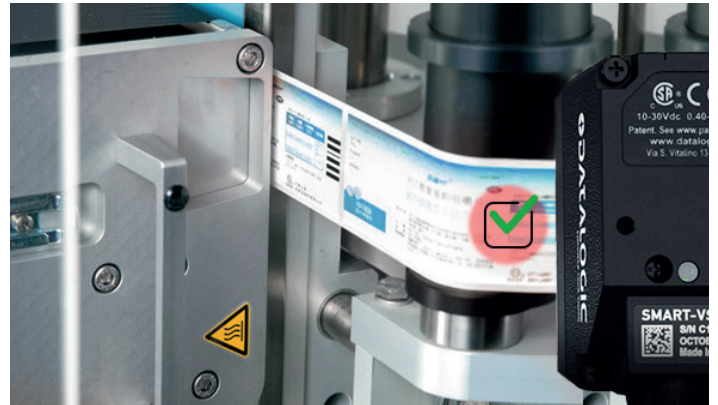
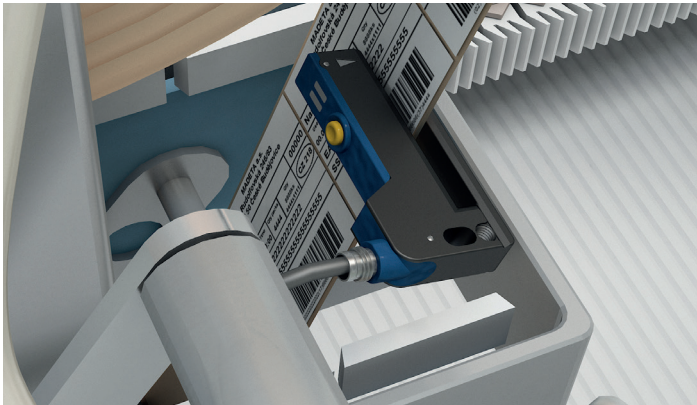


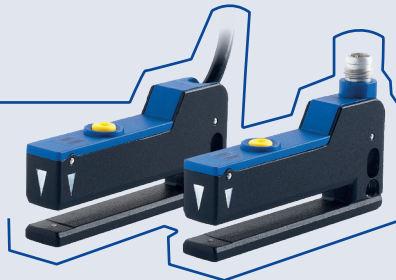
Datalogic sensors for labeling

SR23 and SRX3 Fork Sensors, Smart-VS Vision Sensor



- Fork sensor with IR LED
- Dynamic or static setting
- 12 kHz switching frequency
- Slot 5x50 mm thick labels
- Slim case, dovetail mount

SR23

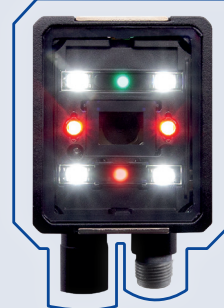


- Ultrasonic fork sensor
- Clear on clear detection
- Fits paper, plastic, metal
- Slot 3x68 mm with bevel
- 2 mm gap between labels

SRX3



SMART VS



- Smart Vision Sensor
- Machine learning teach-in
- LED pointer and autofocus
- Op. distance 50-150 mm
- Fast response time 50 ms
- Ethernet point to point
- NPN/PNP push-pull output



FORK SENSOR

Datalogic photoelectric or ultrasonic fork sensors offer the best solution for any label detection, ranging from invisible plastic foils to thick booklet labels, and from clear-on-clear to paper-on-paper and metal-on-metal, always at the highest resolution and speed.



SMART VISION SENSOR

Datalogic Smart Vision Sensor improves label detection with advanced quality inspection features, checking the printing, integrity, positioning, even at high speed and with an easy setting assisted by machine learning algorithms.

Fork sensors

SR23



Easy installation, quick setting, and precise label detection in print and apply systems, even in fastest packaging machinery and processes.

Technical data

- Slot width 5mm and depth 50mm for normal label or booklet label detection
- UP to 12kHz switching frequency
- IR LED emission for label detection on translucent reel
- Auto-Set for teach-in or dynamic threshold setting
- NPN and PNP outputs with M8 4-pole connector
- Compact and robust metal case with IP65 protection
- Size 11 x 30 x 64 mm

Applications

- Packaging and labeling machinery
- Print and apply systems

SRX3



Reliable label detection, with any type of material, from clear-on-clear films up to the thickest materials that light cannot pass through.

Technical data

- Dynamic or static teach models
- Slot size 3mm
- High resolution up to 2mm label gap
- M8 connector with PNP or NPN output
- M12 connector
- PNP/NPN output and external teach-in
- Rugged and sturdy aluminium housing
- Size 22 x 55 x 90 mm

Applications

- Clear on clear detection
- Transparent or opaque labels
- Metal or plastic foil labels
- Double sheet detection
- Adhesive surface detection

Vision sensors

SMART-VS



The smart vision sensor enabled with A.I. and empowered by machine learning assisted setting algorithms.

Simply clever solution for all your presence and orientation object detection applications.



- AI enabled
- MLAS - Machine Learning Assisted Setting

Technical data

- Machine Learning Assisted Setting
- No vision Tools programming required
- No need of skilled installers just photosensor like setting
- Deterministic response time 50ms
- TEACH Button and comprehensive UI with 5 status LEDs
- 50...150mm operating distance
- Electronic focus control
- Bright Red LED pointer
- Powerful white light illuminator
- Ethernet com available with intuitive WEB Server GUI

Applications

- Food & Beverage
- Pharma and Cosmetics
- Packaging machinery
- Bottling lines
- Automotive, Electronics

MODEL SELECTION

SR23

MODEL	OPTIC FUNCTION	OUTPUT	CONNECTION	ORDER No.
SR23-2-IR-PH	Fork Sensor	PNP	2m Cable	953161000
SR23-2-IR-NH		NPN		953161020
SR23-5-IR-PH		PNP	M8 Connector	953161010
SR23-5-IR-NH		NPN		953161030

SRX3

MODEL	ADJUSTMENT	OUTPUT	CONNECTION	ORDER No.
SRX3-5-US-M12-PNH	Dynamic Teach-in	PNP/NPN +EXT	M12 5 pin	953171000
SRX3-5-US-3-M12-PNH	Static Teach-in	PNP/NPN +EXT	M12 5 pin	953171010
SRX3-6-US-M8-PH	Dynamic Teach-in	PNP+EXT	M8 4 pin	953171020
SRX3-6-US-3-M8-PH	Static Teach-in	PNP+EXT	M8 4 pin	953171030
SRX3-6-US-M8-PN	Dynamic Teach-in	PNP/NPN	M8 4 pin	953171040
SRX3-6-US-3-M8-PN	Static Teach-in	PNP/NPN	M8 4 pin	953171050

SMART-VS

MODEL	DESCRIPTION	OPTIC	ILLUMINATOR	I/O	ORDER N°
Smart-VS-MR-5-150-WH-O	SVS WP 150mm OUT	7mm	White polarized	30Out + 2In + ETH	959971320